



# FORMATION EVALUATION LOG



## WELL : BASKER-3

FROM (m): 1100 TO (m): 2680 SCALE: 1/ 500

Country : AUSTRALIA	Latitude : 38°18'42.44"S	HOLE / CASING INFO 17 1/2" Hole to (mMDRT) : 1112m	Spud Date : 01-03-2006
Basin : GIPPSLAND	Longitude : 148°43'29.78"E	12 1/4" Hole to (mMDRT) : xxxx	Total Depth Date : xx-03-2006
Field : BASKER	UTM Co-ord X (m E) : 650106.2	13 3/8" Shoe at (mMDRT) : xxx.xm	Total Depth (mRT) : xxxx
Permit : VIC/L26	UTM Co-ord Y (m N) : 5761989.6	9 5/8" Shoe at (mMDRT) : xxxx.xm	T.V.D. (mSS MSL) : 3085m
Well Type : DEVELOPMENT	RT-LAT (m) : 21.5		Status : COMPLETED
Rig Name : OCEAN PATRIOT	RT-Seabed (m) : 175.1		

### ABBREVIATIONS

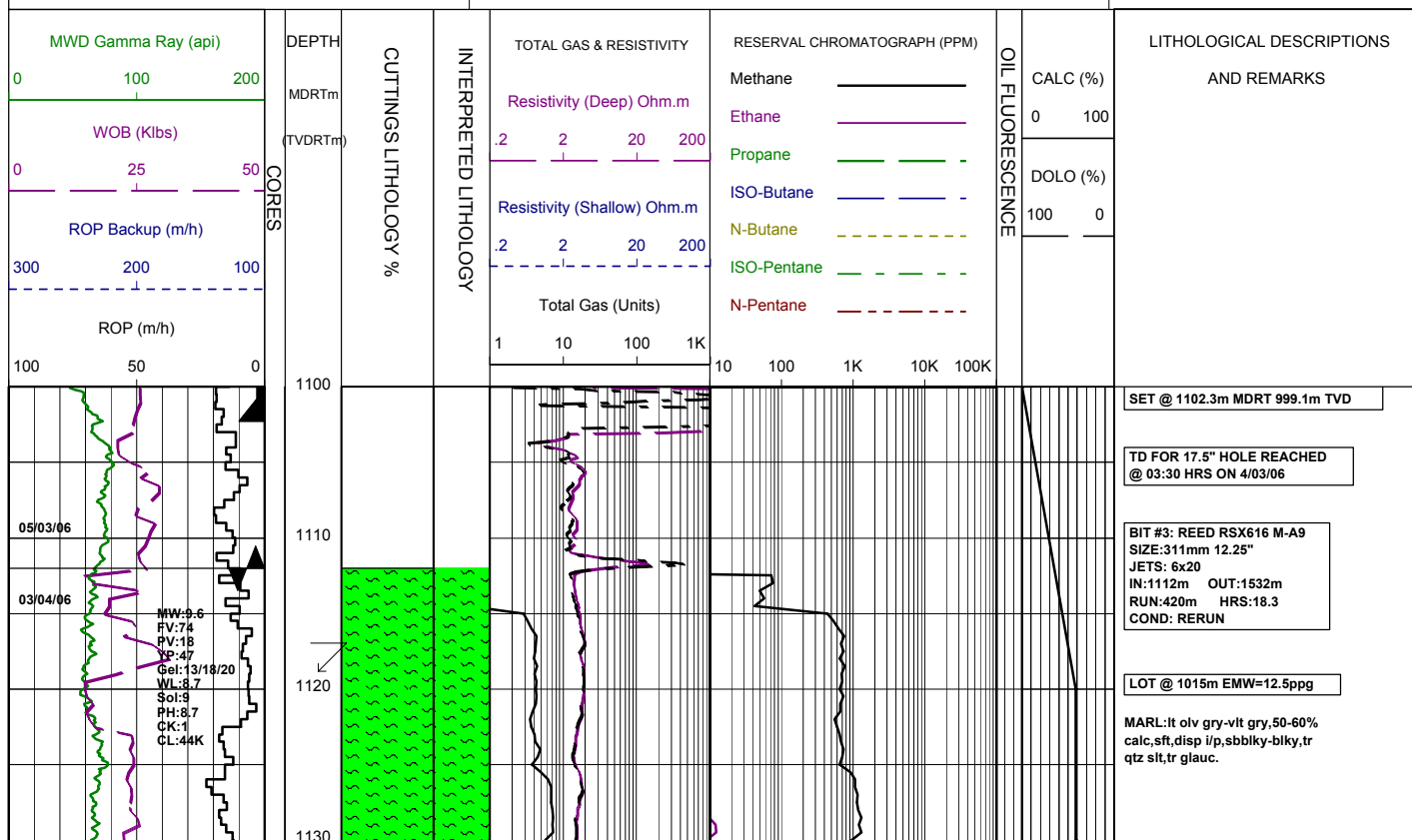
MW MUD WEIGHT	NB NEW BIT
FV FUNNEL VISCOSITY	RR RERUN BIT
PV PLASTIC VISCOSITY	CB CORE BIT
YP YIELD POINT	WOB WEIGHT ON BIT
FC FILTER CAKE	RPM REVS PER MINUTE
SOL SOLIDS	FLC FLOW CHECK
WL FILTRATE	CR CIRCULATE RETURNS
SD SAND - %	PR POOR RETURNS
S SALINITY - PPM	NR NO RETURNS
RM MUD RESISTIVITY	BG BACKGROUND GAS
RMF MUD FILTRATE	TG TRIP GAS
C CARBIDE TEST	STG SHORT TRIP GAS
LAT LOGGED AFTER TRIP	CG CONNECTION GAS
DS DEVIATION SURVEY	SG SWAB GAS
	SVG SURVEY GAS

### LITHOLOGY LEGEND

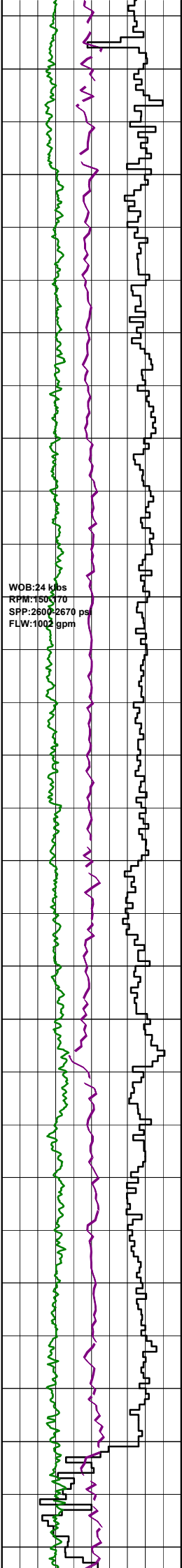
	Claystone		Limestone		Brachiopoda
	Siltstone		Dolomite		Cement
	ar. Silt ar		Coal		Sponges
	Fine SST		Gypsum		Glauconite
	Medium SST		Lithic Fragment		Pyrite
	Coarse SST		Foraminifera		Iron Minerals
	Marl		Fossils		Mica
	Clay, Limestone		Bryozoa		Carb Fragments

### ENGINEERING LEGEND

	Shoe		FIT
	Mud loss		Mud gain
	Deviation survey		
	DST		
	Test		
	Sidewall Core		
	Core		
	RFT		







1280  
 1290  
 1300 (1156.2)  
 1310  
 1320  
 1330  
 1340  
 1350 (1192.9)  
 1360  
 1370  
 1380  
 1390  
 1400 (1229)  
 1410  
 1420

Survey @ 1291.3m: 42.63° 129.6Az

MARL:lt olv gry,tr olv gry,40-50% calc,tr silt,tr carb spk,tr glauc, tr vf pyr,rr foram,sft-frm,occ mod hd,pred sbbiky.

Survey @ 1320.0m: 42.79° 129.8Az

MARL:lt olv gry,tr olv gry,40-50% calc,tr silt,tr carb spk,tr glauc, tr vf pyr,rr foram,sft-frm,occ mod hd,pred sbbiky.

Survey @ 1348.9m: 42.77° 129.3Az

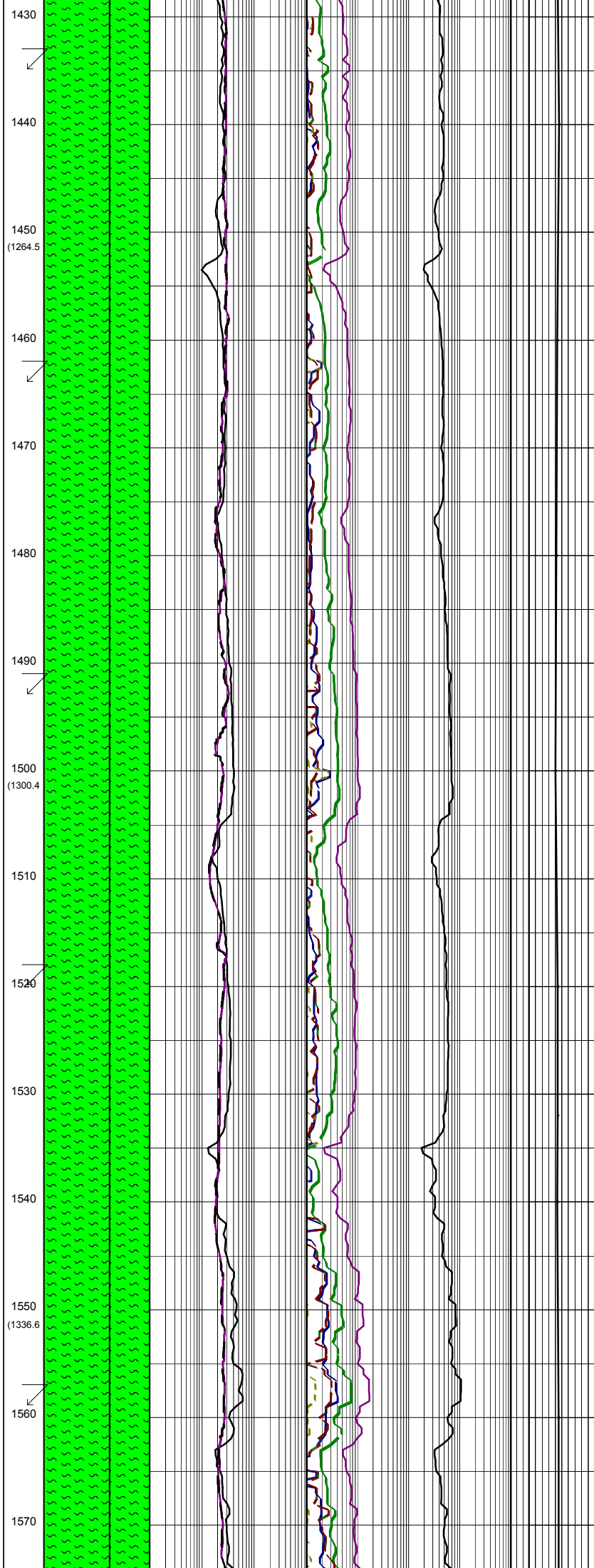
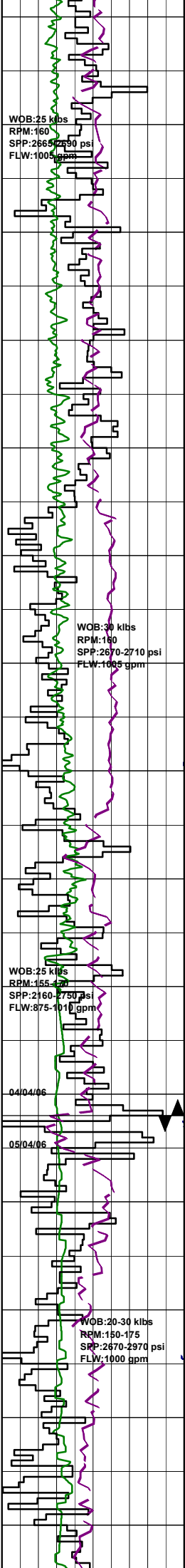
MARL:lt olv gry-olv gry,40-50% calc,tr silt,tr f-med qtz gm, tr glauc,rr CLCAR,tr pyr,tr carb spk, sft-frm,sbbiky,occ amor.

Survey @ 1377.7m: 43.56° 129.6Az

MARL:lt olv gry-olv gry,40-50% calc,tr silt,tr f-med qtz gm, tr glauc,tr pyr,tr carb spk,sft-frm, sbbiky,occ amor.

Survey @ 1406.3m: 45.07° 130.1Az

MARL:lt olv gry-olv gry,40-45% calc,tr silt,tr glauc,tr fg pyr, tr carb spk,sft-frm,sbbiky.



Survey @ 1435.0m: 45.15° 130.1Az

MARL: lt olv gry-olv gry, 40-45% calc, slty, tr glauc, tr vf pyr, tr carb spk, sft-frm, com mod hd, sbbiky.

Survey @ 1463.6m: 44.21° 131.6Az

MARL: lt olv gry-olv gry, 40-45% calc, slty, mnv vf aren, tr carb spk, rr pyr lam, frm-mod hd, sbbiky-biky.

Survey @ 1492.3m: 43.35° 131.5Az

MARL: lt olv gry-olv gry, 40-50% calc, slty, mnv vf aren, tr carb spk, rr pyr lam, frm-mod hd, sbbiky-biky.

Survey @ 1520.8m: 43.60° 132.1Az

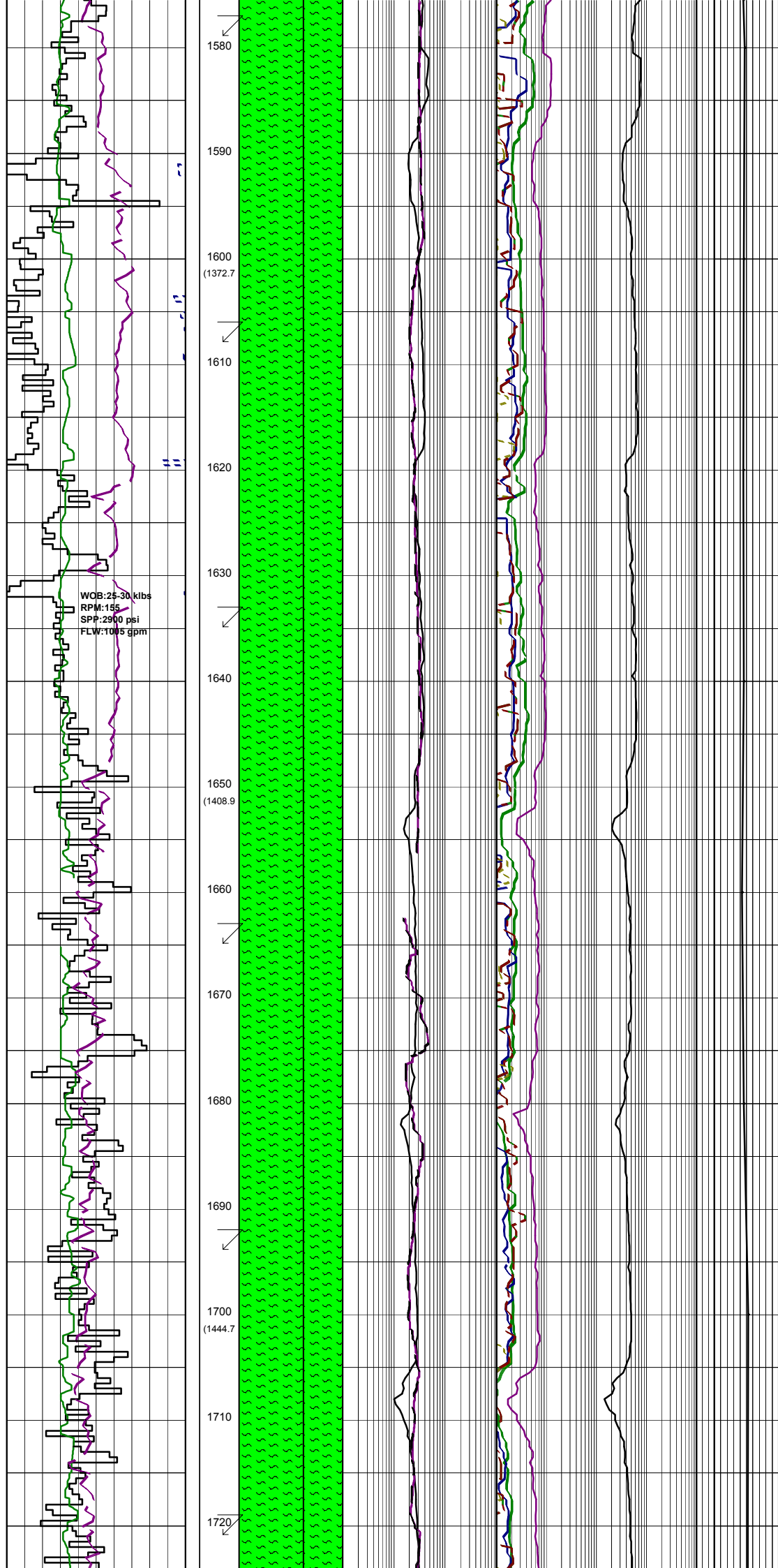
MARL: lt olv gry-olv gry, 40-45% calc, slty, mnv vf aren, tr carb spk, rr pyr lam, frm-mod hd, sbbiky-biky.

BIT #3RR1: REED RSX616 M-A9  
SIZE: 311mm 12.25"  
JETS: 6x20  
IN: 1532m OUT: xxxxm  
RUN: xxm HRS: xxx  
COND:

MARL: lt olv gry, lt gry-med lt gry, 20-30% calc, slty, tr vf qtz grn, frm-mod hd, rr hd, sbbiky-biky.

Survey @ 1558.1m: 44.32° 131.2Az

MARL: lt olv gry, lt gry-med lt gry, occ calc, slty i/p, tr vf qtz grn, tr pyr, tr glauc, frm-mod hd, sft i/p, rr hd, sbbiky-biky.



Survey @ 1578.7m: 43.65° 134.2Az

MARL:lt olv gry,lt gry-med lt gry,  
sity i/p,tr vf qtz grn,tr pyr, tr  
glauc,frm-mod hd,sft i/p,rr hd,  
sbbiky-blky.

Survey @ 1607.3m: 43.11° 133.8°Az

MARL:med lt gry-lt olv gry,olv gry,  
sity,40-45% calc,tr vf pyr,tr glauc,  
tr carb spk,sft-frm,occ mod hd,  
sbbiky-blky.

Survey @ 1635.9m: 43.81° 134.5°Az

MARL:med lt gry-lt olv gry,  
olv gry,sity,40-45% calc,tr vf pyr,  
tr glauc,tr carb spk,sft-frm,occ mod  
hd,sbbiky-blky.

Survey @ 1664.5m: 44.19° 133.4°Az

MARL:olv gry,sity,40-45% calc,  
tr vf pyr,tr glauc,tr carb spk,  
sft-frm,occ mod hd,sbbiky-blky.

Survey @ 1693.1m: 44.75° 134.1°Az

MARL:olv gry,occ lt olv gry,  
sity,pred 40-45% calc,tr v calc,  
tr vf pyr,tr glauc,tr carb spk,  
sft-frm,occ mod hd,sbbiky-blky.

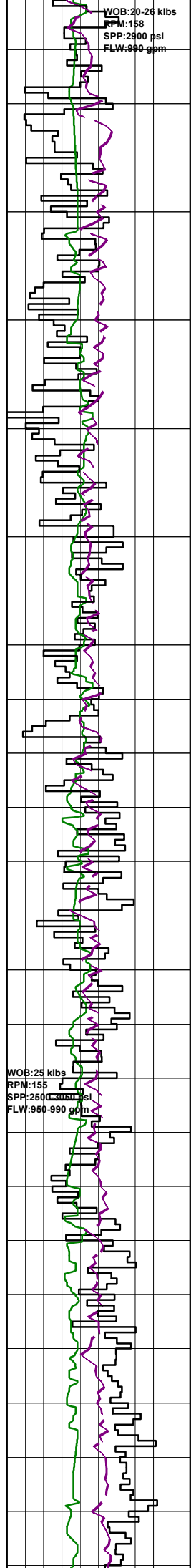
Survey @ 1721.7m: 44.33° 132.8°Az

WOB: 25-30 klbs  
RPM: 155  
SPP: 2900 psi  
FLW: 1015 gpm

1580  
1590  
1600 (1372.7)  
1610  
1620  
1630  
1640  
1650 (1408.9)  
1660  
1670  
1680  
1690  
1700 (1444.7)  
1710  
1720

WOB:20-26 klbs  
RPM:158  
SPP:2900 psi  
FLW:990 gpm

1730  
1740  
1750  
(1480.4)  
1760  
1770  
1780  
1790  
1800  
(1516.3)  
1810  
1820  
1830  
1840  
1850  
(1552.1)  
1860  
1870



MARL:olv gry,sty,pred 40-45% calc,  
tr vf pyr,tr glauc,tr carb spk,  
sft frm,occ mod hd,sbbiky-blky.

Survey @ 1750.4m: 44.18° 131.7°Az

MARL:olv gry,sty,pred 40-45%  
calc,tr vf pyr,tr glauc,tr carb spk,  
sft frm,occ mod hd,sbbiky-blky.

Survey @ 1779.2m: 44.25° 130.5°Az

MARL:olv gry,sty,pred 40-45%  
calc,tr vf pyr,tr glauc,tr carb spk,  
sft frm,occ mod hd,sbbiky-blky.

Survey @ 1807.9m: 44.00° 128.9°Az

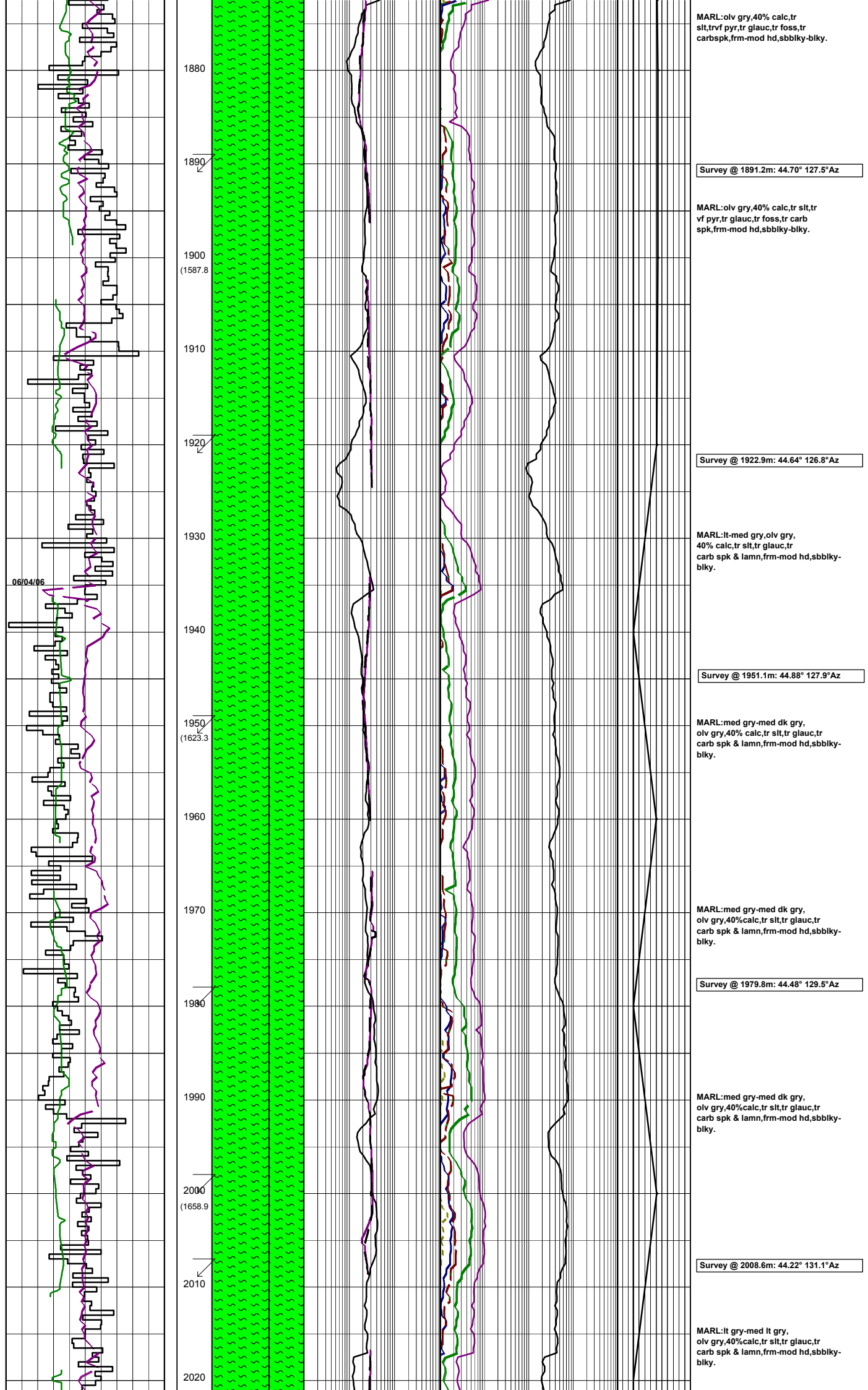
MARL:olv gry,occ lt olv gry,50%  
calc,tr slit,tr vf pyr,tr glauc,  
tr foss,tr carb spk,frm-mod hd,  
sbbiky-blky.

Survey @ 1836.7m: 44.28° 128.4°Az

MARL:olv gry,40% calc,tr slit,  
vf pyr,tr glauc,tr foss,tr carb  
spk,frm-mod hd,sbbiky-blky.

Survey @ 1865.5m: 44.43° 128.0°Az

WOB:25 klbs  
RPM:155  
SPP:2500 psi  
FLW:950-990 gpm



MARL:olv gry,40% calc,tr  
slt,trvf pyr,tr glauc,tr foss,tr  
carbspk,frm-mod hd,sbbiky-biky.

Survey @ 1891.2m: 44.70° 127.5°Az

MARL:olv gry,40% calc,tr  
vf pyr,tr glauc,tr foss,tr carb  
spk,frm-mod hd,sbbiky-biky.

Survey @ 1922.9m: 44.64° 126.8°Az

MARL:lt-med gry,olv gry,  
40% calc,tr slt,tr glauc,tr  
carb spk & lamn,frm-mod hd,sbbiky-  
biky.

Survey @ 1951.1m: 44.88° 127.9°Az

MARL:med gry-med dk gry,  
olv gry,40% calc,tr slt,tr glauc,tr  
carb spk & lamn,frm-mod hd,sbbiky-  
biky.

MARL:med gry-med dk gry,  
olv gry,40%calc,tr slt,tr glauc,tr  
carb spk & lamn,frm-mod hd,sbbiky-  
biky.

Survey @ 1979.8m: 44.48° 129.5°Az

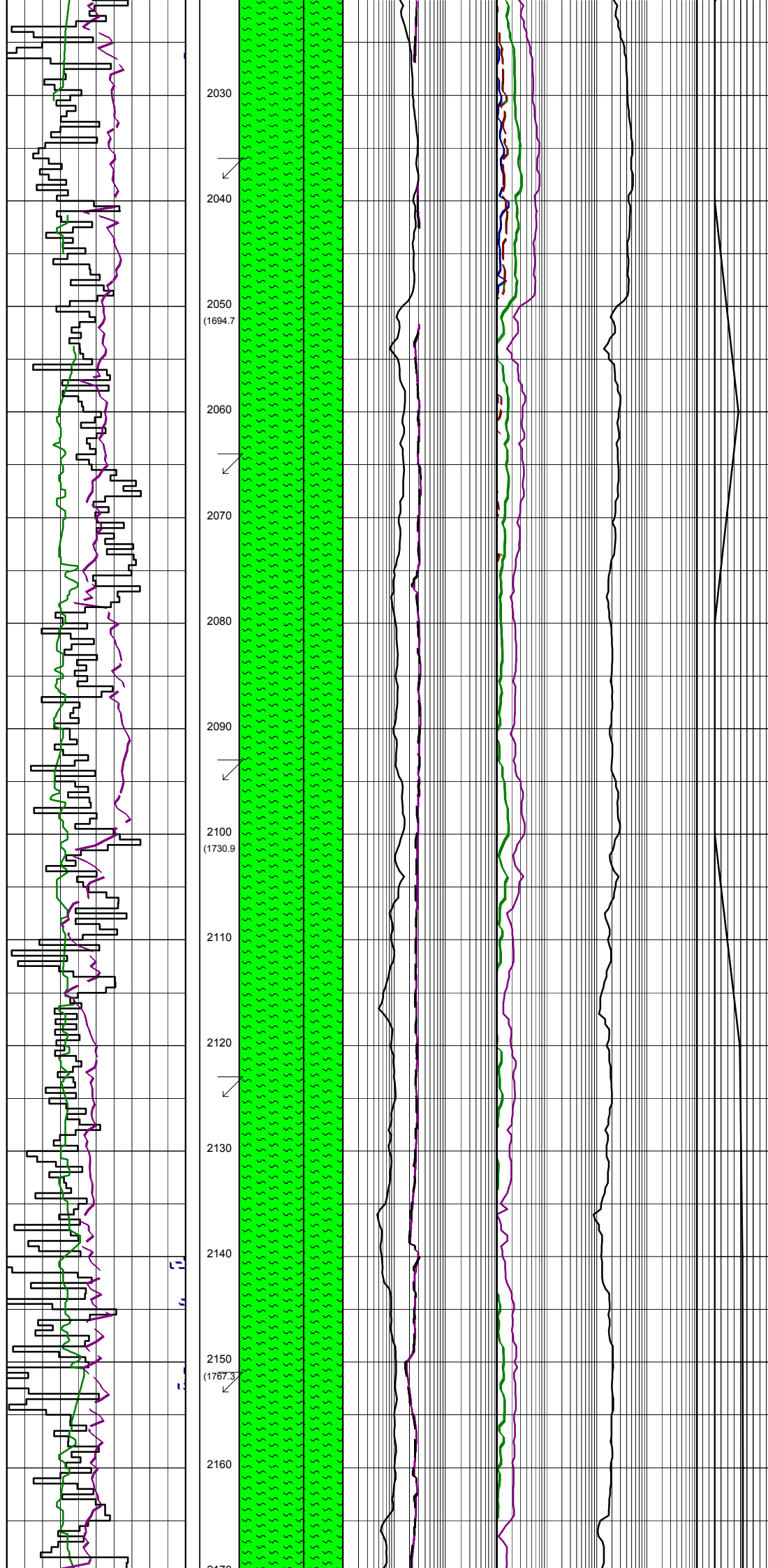
MARL:med gry-med dk gry,  
olv gry,40%calc,tr slt,tr glauc,tr  
carb spk & lamn,frm-mod hd,sbbiky-  
biky.

Survey @ 2008.6m: 44.22° 131.1°Az

MARL:lt gry-med lt gry,  
olv gry,40%calc,tr slt,tr glauc,tr  
carb spk & lamn,frm-mod hd,sbbiky-  
biky.

06/04/06

1880  
1890  
1900 (1587.8)  
1910  
1920  
1930  
1940  
1950 (1623.3)  
1960  
1970  
1980  
1990  
2000 (1658.9)  
2010  
2020



2030

MARL:lt gry-med lt gry,  
olv gry,40% calc,tr silt,tr glauc,tr  
carb spk & lamn,frm-mod hd,sbbiky-  
biky.

Survey @ 2037.4m: 44.35° 131.6°Az

2040

2050  
(1694.7)

MARL:lt gry-med lt gry,  
olv gry,40% calc,tr silt,tr glauc,  
tr carb spk & lamn,frm-mod hd,  
sbbiky-biky.

Survey @ 2066.3m: 44.27° 131.3°Az

2060

2070

MARL:lt gry-med lt gry,olv  
gry,40% calc,tr silt,tr glauc,tr carb spk  
& lamn,frm-mod hd,sbbiky-biky.

2080

MARL:lt gry-med lt gry,olv  
gry,40% calc,tr silt,tr glauc,tr carb  
spk & lamn,frm-mod hd,sbbiky-biky.

2090

Survey @ 2095.3m: 42.32° 127.3°Az

2100  
(1730.9)

MARL:lt gry-med lt gry,  
olv gry,40%calc,tr silt,tr glauc,  
tr carb spk & lamn,frm-mod hd,  
sbbiky-biky.

Survey @ 2124.1m: 43.24° 128.6°Az

2120

2130

MARL:lt gry-med lt gry,  
olv gry,40% calc,tr silt,tr carb spk  
& lamn,frm-mod hd,sbbiky-biky.

2140

Survey @ 2153.0m: 44.12° 130.2°Az

2150  
(1767.3)

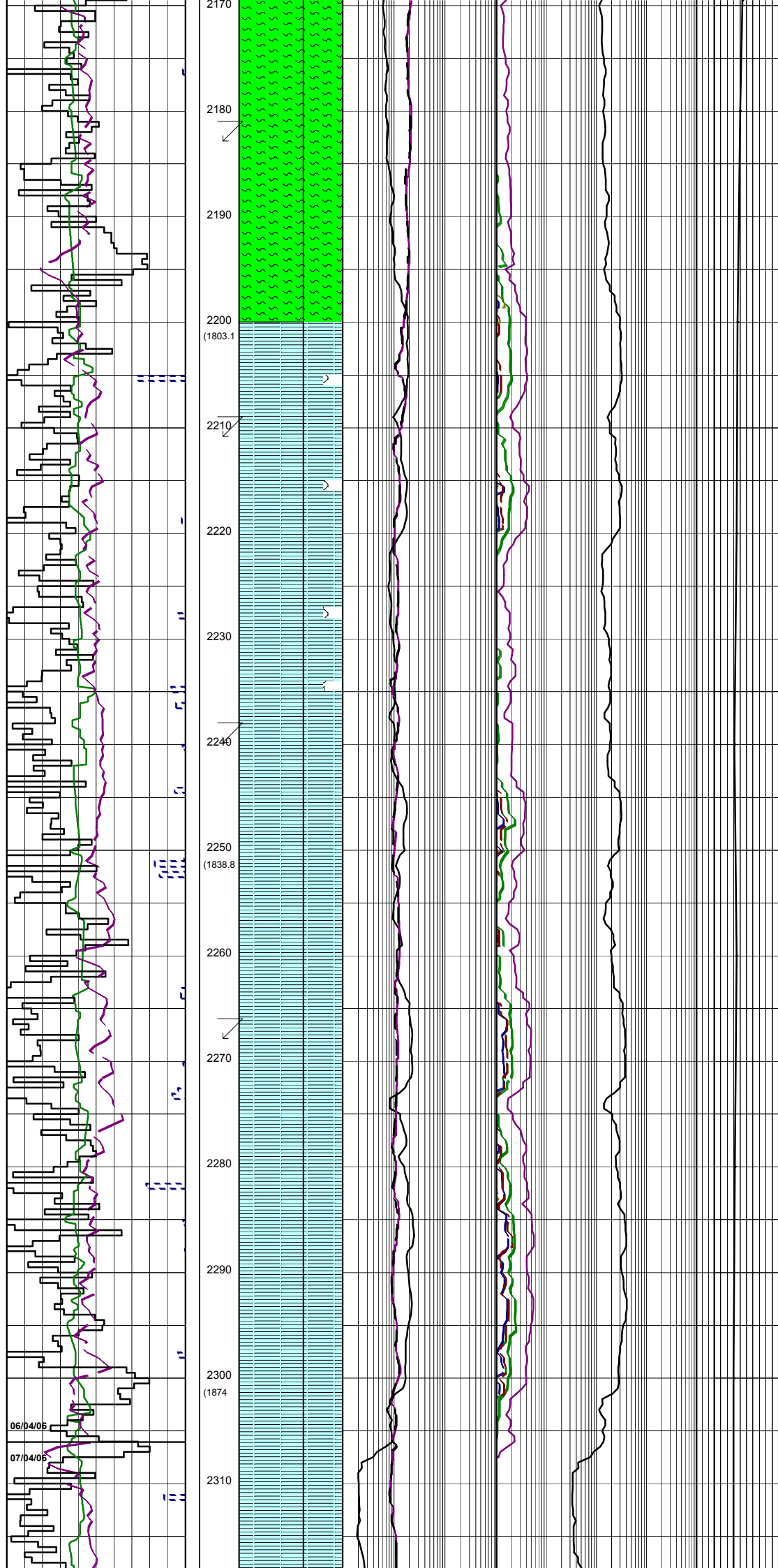
MARL:lt gry-med lt gry,  
olv gry,40%calc,tr silt,tr carb spk  
& lamn,frm-mod hd,sbbiky-biky.

2160

2170

MARL:lt gry-med lt gry,  
olv gry,40%calc,tr silt,tr carb spk  
& lamn,frm-mod hd,sbbiky-biky.





MARL:lt gry-med lt gry,olv gry,40% calc,tr slt,tr carb spk & lamn, frm-mod hd,sbbiky-blky.

Survey @ 2181.8m: 44.46° 130.2°Az

MARL:lt gry-med lt gry,olv gry,20-30% calc,tr slt,tr carb spk,tr 20-30% vfqtz grn,clp i/p,frm-mod hd,sbbiky-blky.

Survey @ 2210.6m: 44.13° 130.2°Az

CALCAREOUS CLAYSTONE:lt-med gry,olv gry,20-30% calc,tr slt,tr glauc,tr foss frag,tr 20 % vf qtz grn,sft-frm,sbbiky,amor i/p, occ disp.

CALCAREOUS CLAYSTONE:lt-med gry,olv gry,20-30% calc,tr slt, tr glauc,trfoss frag,tr pyr,tr 30 % vf qtz grn,sft-frm,sbbiky, amor i/p,occ disp.

Survey @ 2239.3m: 44.76° 130.9°Az

CALCAREOUS CLAYSTONE:lt-med gry,olv gry,20-30% calc,tr slt, tr glauc,tr foss frag,tr pyr,tr 30% vf qtz grn,sft-frm,sbbiky,amor i/p, occ disp.

Survey @ 2267.9m: 45.28° 131.3°Az

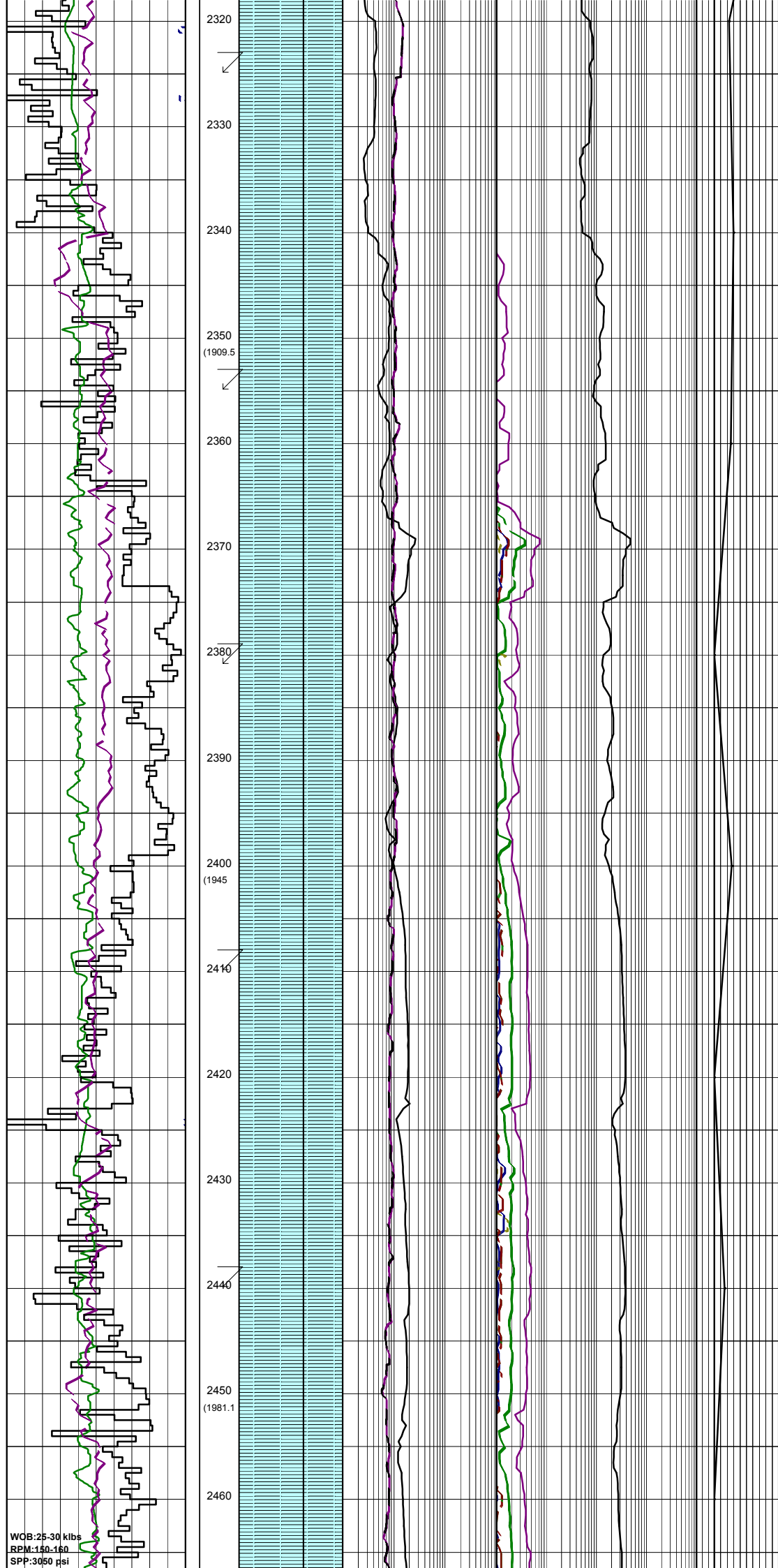
CALCAREOUS CLAYSTONE:lt-medgry,olv gry,occ med gry,20% calc to glauc to slt,tr carb spk,tr 20% vfqtzgrn, tr pyr,sft-mod hd,sbbiky-blky,tr calcarentie, vit gry,sft-frm,vf-i,wl srt sbrnd-rnd,8% Por.

Survey @ 2296.4m: 44.97° 130.7°Az

CALCARIOUS CLAYSTONE:lt-med gry,olv gry,tr carb spks,tr qtz, sft-mod hd,sbbiky-blky.

POOH to Casing shoe for BOP repairs

CALCARIOUS CLAYSTONE:lt-med dk gry,olv gry,tr carb spks,tr slt,tr glauc,sft-mod hd,tr 5% cklar,sbbiky-blky.



Survey @ 2325.2m: 44.88° 130.5°Az

CALCARIOUS CLAYSTONE:it-med dk gry,olv gry,abdt calc,tr carb spks,tr slt,tr glauc,sft-mod hd, tr 5% clcar, tr 10% qtz grn, sbbiky-blky.

Survey @ 2354.0m: 45.16° 130.4°Az

CALCARIOUS CLAYSTONE:it-med dk gry,olv gry,abdt calc,tr carb spks,tr slt,sft-mod hd,tr 5% clcar, tr 10% qtz grn,sbbiky-blky.

CALCARIOUS CLAYSTONE:med lt-drk gry,calc, tr dis pyr,vstf-fm, sbbiky-blky.

Survey @ 2382.7m: 44.96° 130.7°Az

CALCARIOUS CLAYSTONE:med-olv gry,tr dis pyr,tr carb spk,tr micro fossil,vstf-fm,sbbiky.

Survey @ 2410.9m: 43.07° 129.6°Az

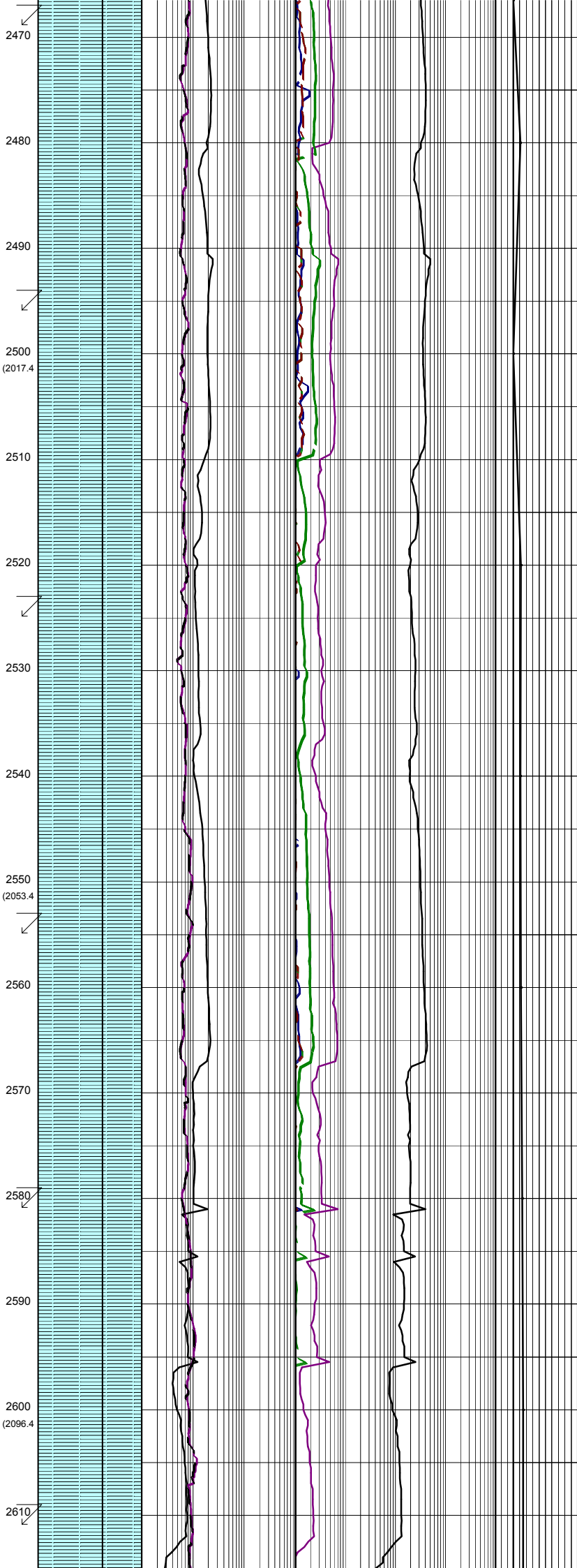
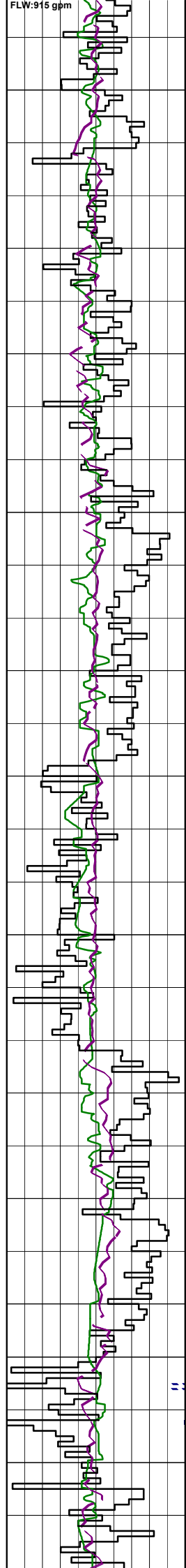
CLAYSTONE:med-med dk olv gry, 10-15% calc,tr pyr,tr carb spk,sft-fm,sbbiky-blky.

Survey @ 2439.3m: 44.23° 131.4°Az

CLAYSTONE:med-med dk olv gry, 10-15% calc,tr pyr,tr carb spk,sft-fm,sbbiky-blky.

CLAYSTONE:med dk-olv gry, 10-15% calc,tr pyr,tr carb spk, sft-mod,sbbiky-blky.

WOB:25-30 klbs  
RPM:150-160  
SPP:3050 psi



Survey @ 2468.0m: 43.03° 131.3°Az

CLAYSTONE:med-med drk olv gry,  
10-15% calc,tr dis pyr,tr carb  
spk,sft-fm,sbbiky-blky.

Survey @ 2496.8m: 43.58° 132.4°Az

CLAYSTONE:med-med dk olv gry,  
10-15% calc,tr dis pyr,tr carb  
spk,tr micr foss,sft-fm,sbbiky-  
blky.

CLAYSTONE:med dk-dk gry,  
10 % calc,tr dis pyr,tr carb spk,  
sft-fm,sbbiky-blky.

Survey @ 2525.4m: 43.73° 133.8°Az

CLAYSTONE:med-med dk olv gry,  
10% calc,tr dis pyr,tr carb spk,  
sft-fm,sbbiky-blky.

CLAYSTONE:med-med dk-dk gry,  
10% calc,tr carb spk,tr micr foss,  
sft-fm,sbbiky-blky.

Survey @ 2554.2m: 45.66° 132.6°Az

CLAYSTONE:med gry-med dk gry,olv gry,  
10% calc,tr pyr,tr carb spk,sity ip,  
sft-mod hd.,sbbiky-blky.

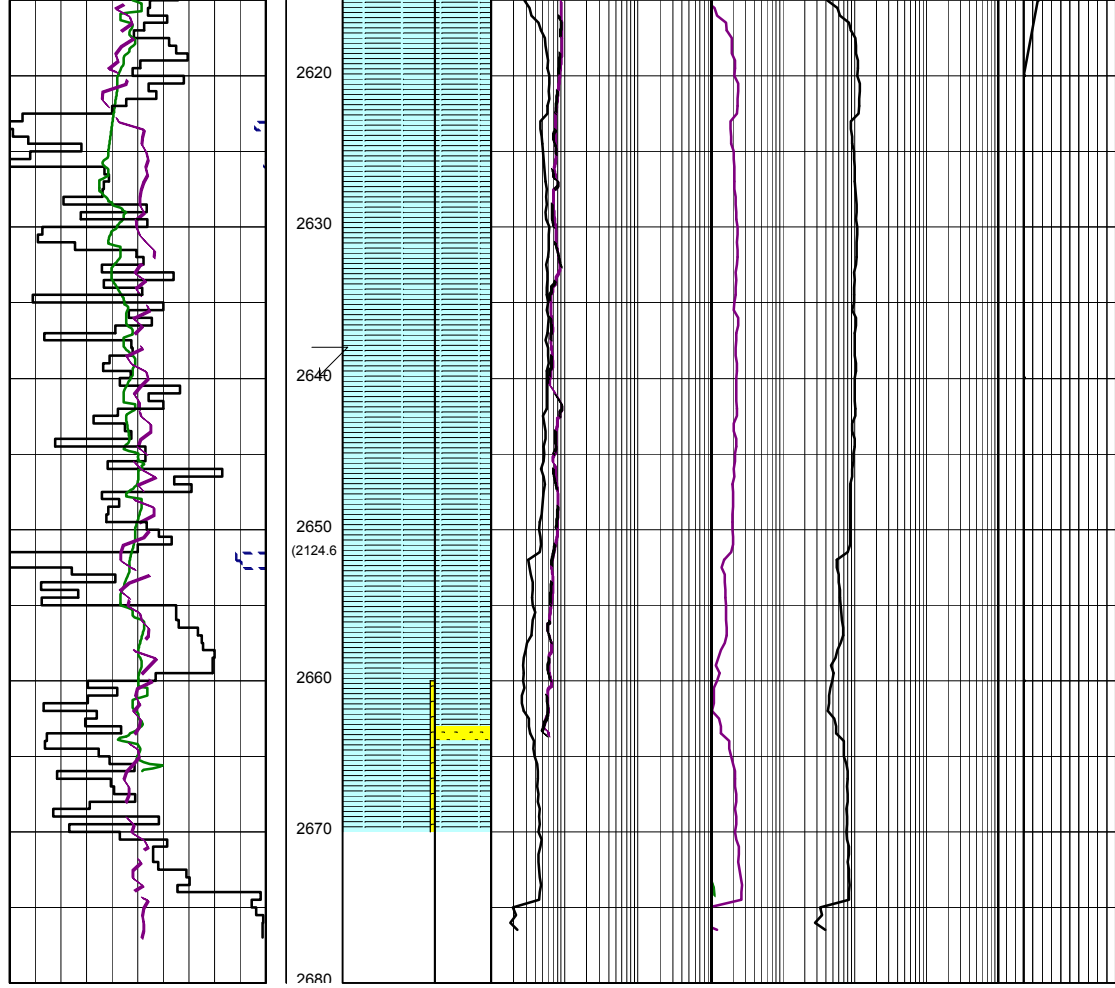
Survey @ 2582.8m: 45.26° 131.2°Az

CLAYSTONE:med gry-med dk gry,olv gry,  
10% calc,tr glauc,tr carb spk,sity ip,  
tr vf qtz grn,sft-mod hd.,sbbiky-blky.

Survey @ 2611.4m: 44.15° 132.1°Az

CLAYSTONE:med gry-med dk gry,olv gry,  
10% calc,tr pyr,tr carb spk,tr lauc.

2470  
2480  
2490  
2500  
(2017.4)  
2510  
2520  
2530  
2540  
2550  
(2053.4)  
2560  
2570  
2580  
2590  
2600  
(2096.4)  
2610



sly i/p, tr vf qtz grn, sft frm, occ mod hd, sbblky-blky.

CLAYSTONE: med gry-med dk gry, olv gry, 10% calc, tr pyr, tr carb spk, tr glauc, sly i/p, tr vf qtz grn, sft frm, occ mod hd, sbblky-blky.

Survey @ 2639.9m: 42.7° 131.1°Az

CLAYSTONE: med gry-med dk gry, olv gry, 10% calc, tr pyr, tr carb spk, tr glauc, sly i/p, tr vf qtz grn, sft frm, occ mod hd, sbblky-blky.

SANDSTONE: clr, trnsl, yelsh bm, orng, f-med grn, rr crs, pr sri, sbang-sbrnd, tr 5% glauc, pr-mod inf por, tr foss, no fluor.